

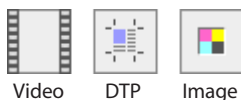
Supported file formats

MediaPro can catalog more than 100 media file formats. MediaPro's capacity to import certain file types is dependent on having the most current version of Apple's QuickTime installed on your computer. QuickTime can be downloaded for free online at: <http://www.apple.com/quicktime/>

There are variations of file format support between the Windows and Mac platforms. For a complete list of supported formats, see page 145.

Cataloging unsupported formats

MediaPro allows you to add basic cataloging support for other media file types by modifying the *Custom* importer list. Thumbnail and media rendering of these files is not supported. Instead, these files will be represented by a generic icon corresponding to the file type group.



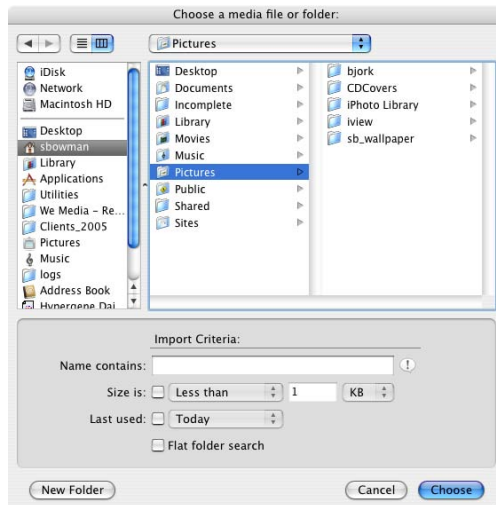
To add a file type to the *Custom importer* list

1. Locate the user-defined Plug-ins > Importers folder. Open the *Custom* file with a text editor.
2. Add your custom formats to the list. For example, to add FileMaker file support, write:
FMP3|6|FileMaker Pro
The first four characters are the file type. The next is the Media ID, which are listed at the top of the list. If you choose the wrong ID, MediaPro will not catalog the file. The remaining segment is the name of the program. You must follow the exact format in order for the new file importer to work properly.
3. Save the text file and launch MediaPro.

Finding file types

On Windows, the file type is always the same as the file extension, with spaces appended to make up four characters.

On the Mac, finding the file type is more complicated. In Mac OS X, there is no utility in the operating system that can identify file types. However,



Import Items from Files/Folders

there is a shareware utility that can assist you, XRay. Drag-and-drop the file on the to the XRay window as directed by the application. Under the *Show* pull-down menu, select *Type, Creator and Extension*. This will display the file type information.

Import items from Files/Folders

1. **Open your catalog** or create a new one.
2. **Choose a file or folder:** Select *Import Items from Files/Folders* in the File menu. Navigate to and select a file, group of files or a folder of media to import into your catalog. Files and folders can be located anywhere: on your hard drive, media cards, removable storage media or a local area network hard drive.
3. **Define Import Criteria:** These filters limit the range of imported media based on file-related criteria, such as filename, file size, or the date last used. For example, to only import files smaller than 1 MB, choose to enable the *Size* option as: "Size is less than 1 MB." Checking the *Flat folder search* option will constrain folder imports to only the folder level selected and ignore all sub-folders.
4. **Import:** Click the *Choose* button and MediaPro will import all files and folders selected.