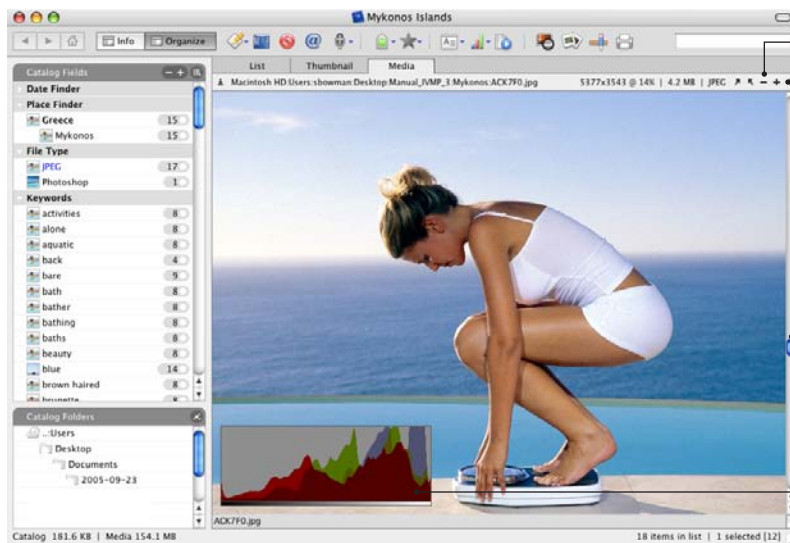


Media View: Click Media tab to choose to this view



The **Zoom** tools let you to increase or reduce the size of the image.

The **Size menu** modifies the display of the image in the Media View window.

The **Scroll bar** in this view scrolls the catalog, not the image. If the image is larger than your viewing area, your mouse will turn into a hand (☞) which can move the image.

Histogram

Media View

This view displays media files at full size, one at a time. Unlike other views, Media View is a real-time presentation of the original media files on screen. This means that MediaPro needs to have access to the file. If the file is not accessible, you will get an error message such as "File Not Found"

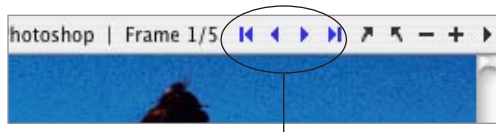
In Media View, you can play animations, movies, and sounds, or navigate inside a QTVR image in this view. Use the onscreen QuickTime controls to interact with movies, music and QTVR. You can also flip through the pages of a PDF or view the various layers of a Photoshop document using the *Pager* tool that appears in the Header bar.

When an image doesn't fit entirely inside the window, the cursor changes to a hand. Use it to drag the image around. Use the right arrow key to advance to the next image. Use the left arrow key to go to the previous image in the catalog.

You can use the Zoom buttons in the upper right side of the Header Bar to zoom in and out. To adjust the size of media display in this view, you can use the *Size* menu. Options include: *Actual Size*, *Scale to Fit*, *Fit Width*, *Fit Height*, *Pin Larger Side*, *Pin Smaller Side*, *Tile*, and a selection of percentages.



Playback media: Use the onscreen QuickTime controls to interact with movies, music and QTVR.



Pager Tool: When multi-layer or multi-page files are presented in this view, the Pager tool will appear in the Header bar, so that you may look at different layers or pages.

For large media files (above 30 megabytes), there can be a slight delay before the media appears on screen. The more powerful the computer, the less likelihood there is of a delay.

To print a particular layer or page within a composite file, go to the page or layer you wish to print and select *Rebuild Item* from the Action menu before printing. For movies and multi-page items, MediaPro only prints the frame assigned as an item's thumbnail.